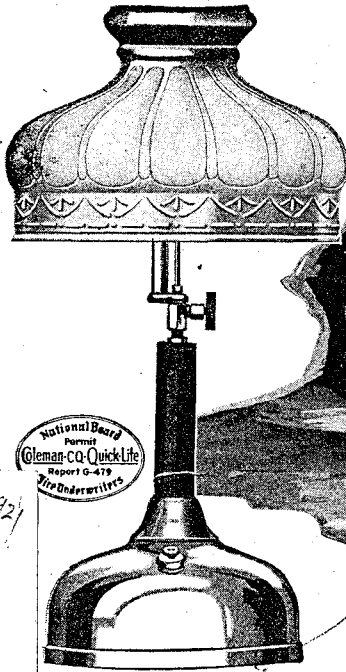


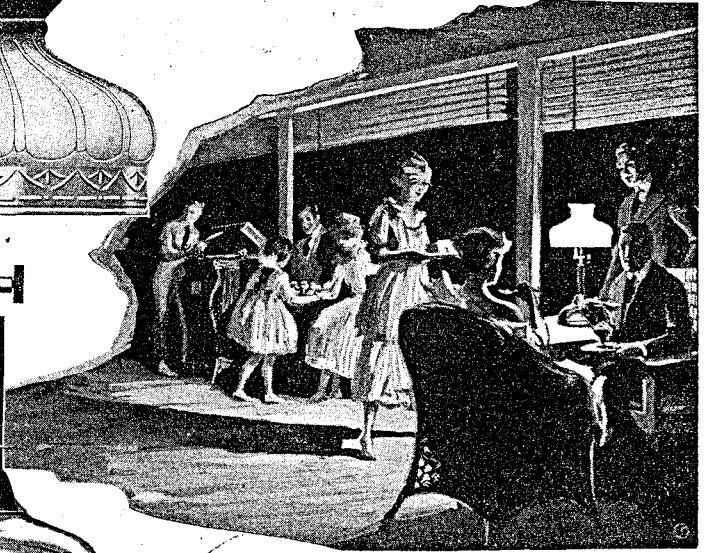
Posted about July 20, 1921

IF WE LOOK
in
THE SATURDAY EVENING POST
of June the 18th,
We will see
THIS ADVERTISEMENT.
A number of People
Will buy
A LAMP
OR LANTERN
Because this
ADVERTISEMENT
Says
THEY ARE GOOD.
Did our work
TODAY
Help make them
100% GOOD
Or will two or three
Customers
Be Disappointed
because we Slighted
OUR WORK
Just a little
BIT.

H. W. Strong



National Board
Patent
Coleman-Quick-Lite
Support G-479
The Underwriters



For Cottage and Camp

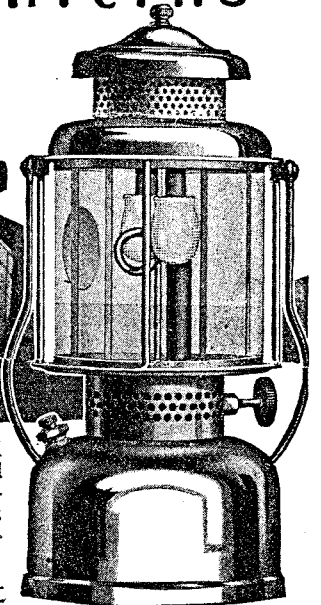


HERE'S just the lamp for your tent-house or summer cottage—the Coleman Quick-Lite! Its 300 candle-power brilliance, pure-white, clear and "soft as shaded sunshine" adds both comfort and pleasure to the summer outing. And such wonderful convenience! No wicks to trim, no chimneys to wash.

The cheering radiance of the Quick-Lite gives the final brightening touch to porch and lawn parties and the many other evening social events of summertime. For any and every use there is no light so strong and steady, so clear and yet so kind to human eyes.

Coleman Quick-Lite

Lamps and Lanterns



And don't forget the Quick-Lite Lantern! It's a real outing necessity. Just the thing for your tent, cabin and campsite—for fishing, boating, hunting; also fine for vacation trips, picnics and "night-out" parties. Won't flicker or blow out in wildest wind. Bug-proof and Rain-proof. 300 candle-power brilliance, steady and sure.

Quick-Lite Lamps and Lanterns generate into full power with common matches. Make and burn their own gas from ordinary motor gasoline. Cost-to-use, but a trifle more than a cent a night. Built of brass, heavily nicked. Will last a lifetime.

The Coleman Lamp Company

Wichita St. Paul Toledo
Dallas Los Angeles
Atlanta Chicago

Canadian Factory: Toronto



MORE than 20,000 Dealers now sell Quick-Lites. If a merchant near you hasn't them, send us his name and we will see that you are supplied. Address nearest Factory Branch, Department F-15

Saturday Evening Post, June 18, 1921